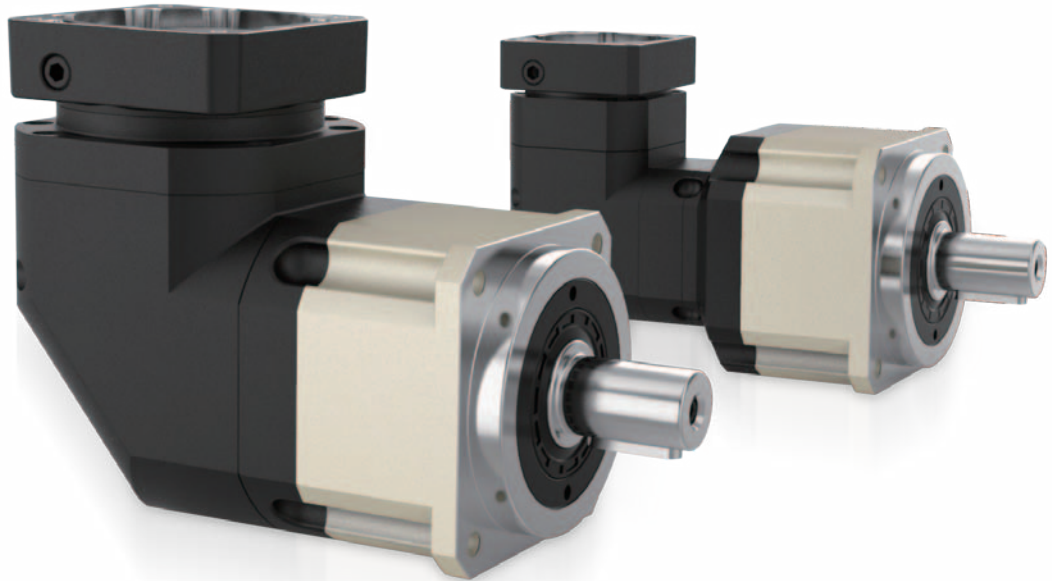


FABR Series

- ✓ FABR042
- ✓ FABR060
- ✓ FABR090
- ✓ FABR115
- ✓ FABR142
- ✓ FABR180
- ✓ FABR220



FABR

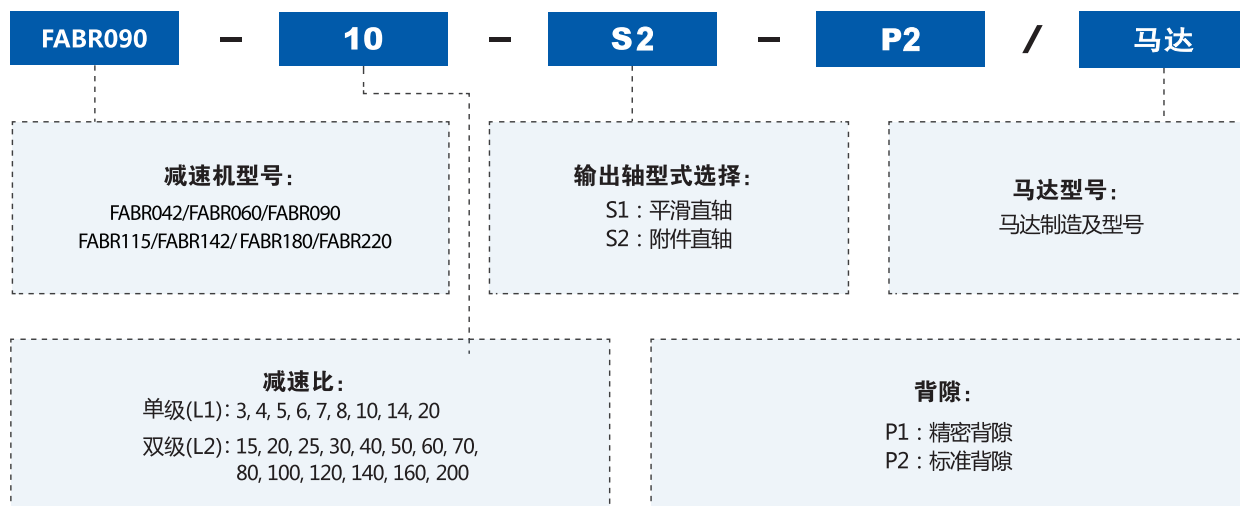
Series

SEIKO QUALITY

SHARED GLOBALLY

精工品质 全球共享

型号说明 MODEL ILLUMINATE



选用范例: FABR090-10-S2-P2 / MHMD-082G1U

性能 -FABR 减速机

规格	单位	节数	减速比 ^①	FABR042	FABR060	FABR090	FABR115	FABR142	FABR180	FABR220
额定输出力矩 T_{2N}	Nm	单级 L1	3	20	55	130	208	342	588	1140
			4	19	50	140	290	542	1050	1700
			5	22	60	160	330	650	1200	2000
			6	20	55	150	310	550	1100	1900
			7	19	50	140	300	550	1100	1800
			8	17	50	140	290	542	1000	1600
			10	14	60	160	330	650	520	1220
			14	-	50	140	300	550	1100	1800
		20	-	40	100	230	450	520	1200	
		双级 L2	12	-	55	130	208	342	588	1140
			15	20	55	130	208	342	588	1140
			20	19	50	140	290	542	1050	1700
			25	22	60	160	330	650	1200	2000
			30	22	55	130	208	342	1200	2000
			35	22	60	160	330	550	1200	2000
			40	22	50	140	290	542	1200	2000
			50	22	60	160	330	650	1200	2000
			60	22	55	150	310	600	1200	2000
			70	22	60	160	330	650	1200	2000
			80	22	50	140	290	542	1200	2000
100	22		50	160	330	650	1200	2000		
120	-	-	150	310	600	1100	1900			
140	-	-	140	300	550	1100	1800			
160	-	-	120	260	500	1000	1600			
200	-	-	100	230	450	520	1220			
紧急制动力矩 T_{2B}	Nm	L1.L2	3~200	3倍额定输出力矩						
额定输入转速 N_1	rpm	L1.L2	3~200	5000	5000	4000	4000	3000	3000	2000
最大输入转速 n_{1B}	rpm	L1.L2	3~200	10000	10000	8000	8000	6000	6000	4000
高精背隙 P0	arcmin	L1	3~20	-	-	≤ 2	≤ 2	≤ 2	≤ 2	≤ 2
		L2	15~200	-	-	≤ 4	≤ 4	≤ 4	≤ 4	≤ 4
精密背隙 P1	arcmin	L1	3~20	≤ 4	≤ 4	≤ 4	≤ 4	≤ 4	≤ 4	≤ 4
		L2	15~200	≤ 7	≤ 7	≤ 7	≤ 7	≤ 7	≤ 7	≤ 7
标准背隙 P2	arcmin	L1	3~20	≤ 6	≤ 6	≤ 6	≤ 6	≤ 6	≤ 6	≤ 6
		L2	15~200	≤ 9	≤ 9	≤ 9	≤ 9	≤ 9	≤ 9	≤ 9
扭转刚性	Nm/arcmin	L1.L2	3~200	3	7	14	25	50	145	225
容许径向力 F_{2r} ^①	N	L1.L2	3~200	780	1530	3250	6700	9400	14500	30000
容许轴向力 F_{2aB} ^①	N	L1.L2	3~200	390	765	1625	3350	4700	7250	14000
使用寿命	hr	L1.L2	3~200	20000 ^③						
		L1	3~20	≥ 95%						
效率 η	%	L2	15~200	≥ 92%						
		L1	3~20	0.9	2.1	6.4	13	24.5	51	83
重量	kg	L2	15~200	1.2	2.5	7.8	14.2	27.5	54	95
使用温度	°C	L1.L2	3~200	-10°C ~ +90°C						
润滑		L1.L2	3~200	合成润滑油脂 / 终身润滑						
防护等级		L1.L2	3~200	IP65						
安装方式		L1.L2	3~200	任意方向						
噪音值 ($n_1=3000$ rpm)	dB	L1.L2	3~200	≤ 61	≤ 63	≤ 65	≤ 68	≤ 70	≤ 72	≤ 74
		L1.L2	3~200	≤ 61	≤ 63	≤ 65	≤ 68	≤ 70	≤ 72	≤ 74

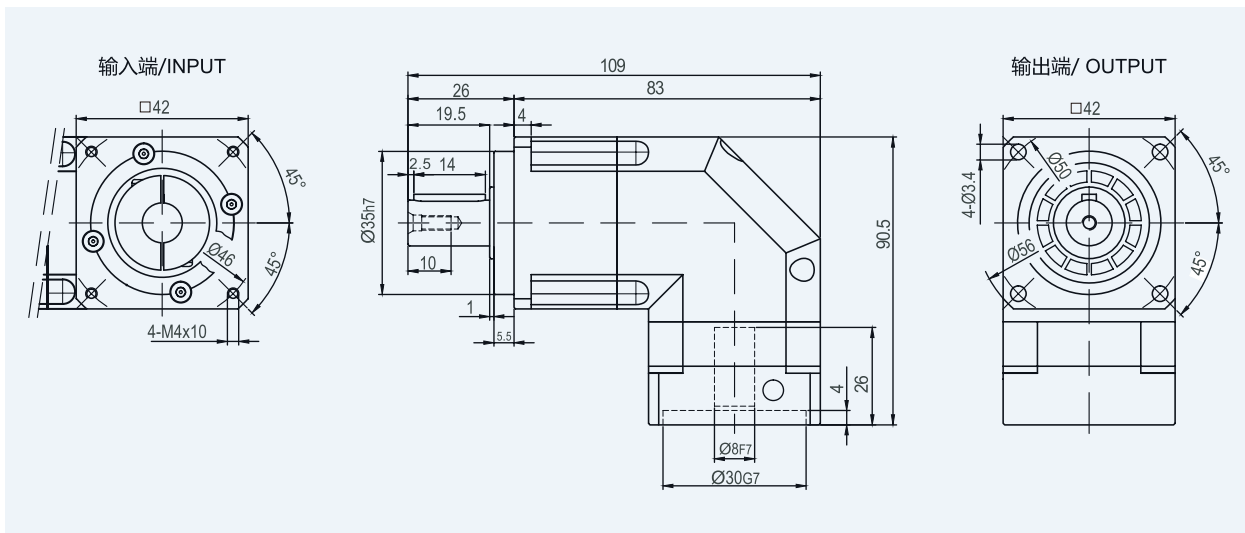
惯量 -FABR 减速机

规格	单位	节数	减速比 ^①	FABR042	FABR060	FABR090	FABR115	FABR142	FABR180	FABR220
转动惯量 J_1	kg·cm ²	L1	3~7	0.09	0.35	2.25	6.84	23.4	68.9	135.4
			8~10	-	0.07	1.87	6.25	21.8	65.6	119.8
			14~20	-	0.07	1.87	6.25	21.8	65.6	119.8
		L2	15~100	0.09	0.09	0.35	2.25	6.84	23.4	68.9
			120~200	-	-	0.31	1.87	6.25	21.8	65.6

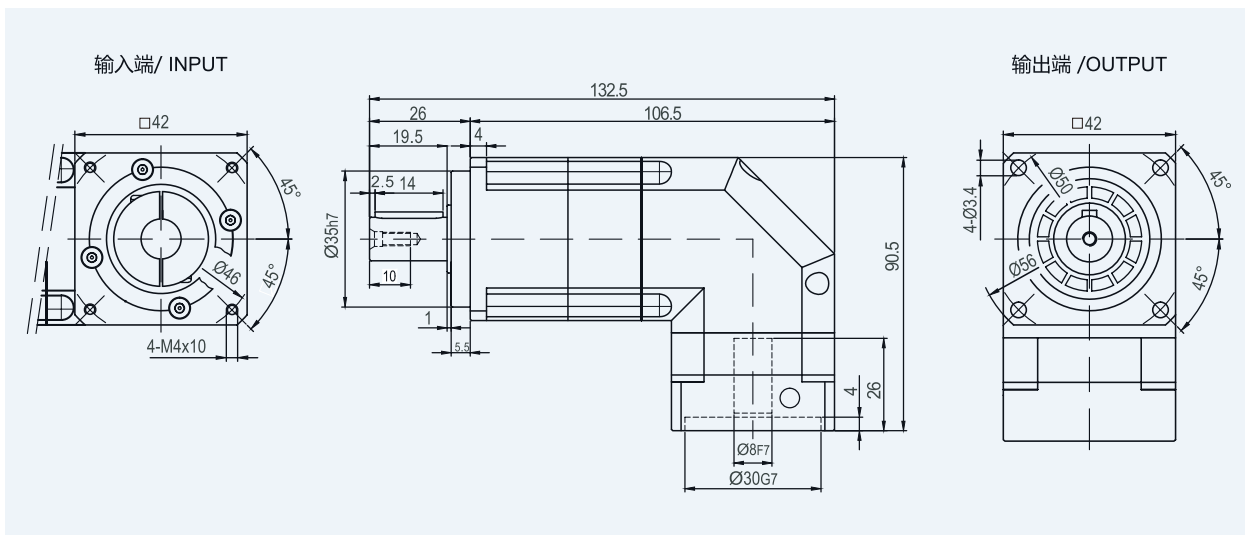
1. 减速比 ($i=N_{in}/N_{out}$) 2. 输出转速 100rpm 时, 作用于输出轴中心位置 3. 连续运转降低使用寿命二分之一

外形尺寸图表 / OUTLINE DIMENSION SHEET

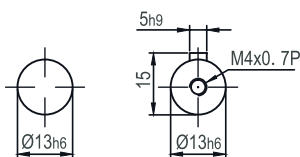
FABR-042-L1



FABR-042-L2



输出轴径



轴型式 S1

轴型式 S2

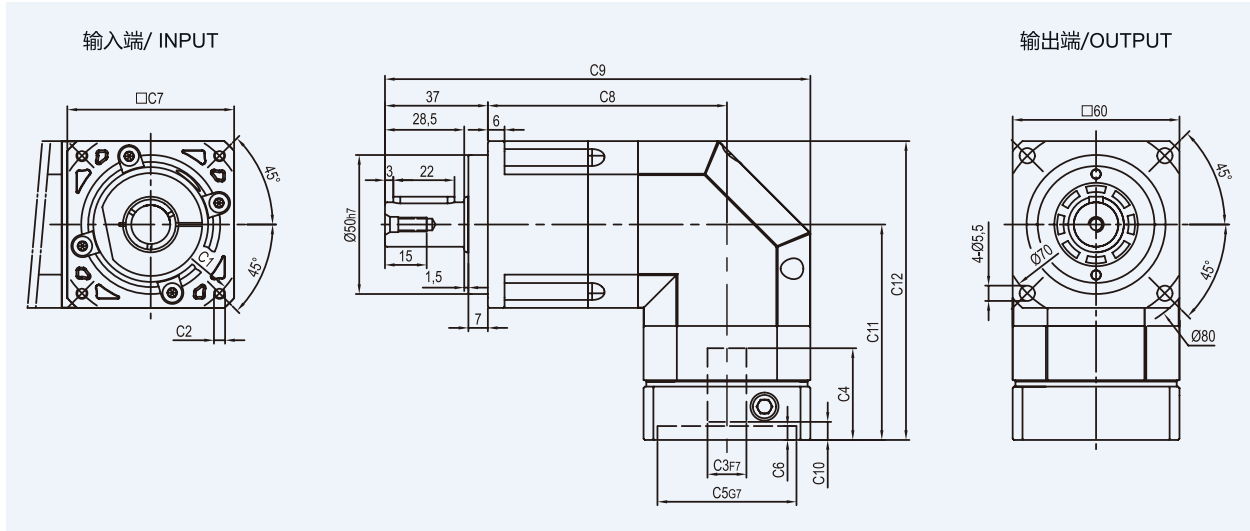
*输入马达连接板之尺寸,可根据客户要求单独定做。

*The input motor specific dimensions could be customised.

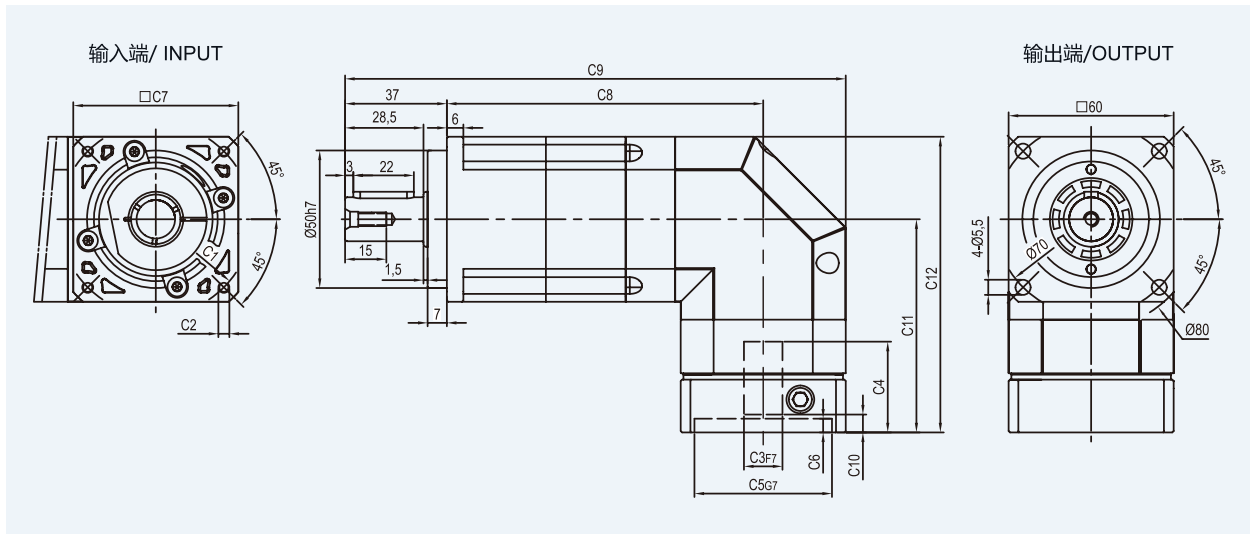
外形尺寸图表 / OUTLINE DIMENSION SHEET

FABR

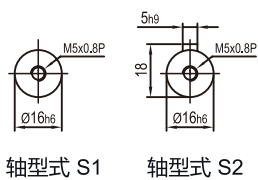
FABR-060-L1



FABR-060-L2



输出轴径



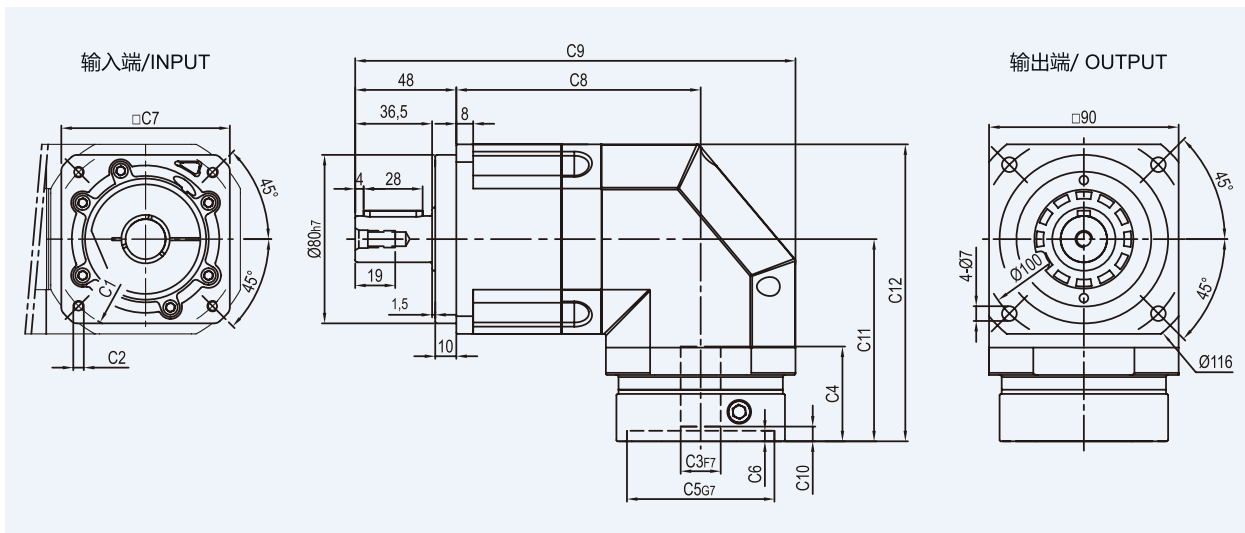
尺寸	C1	C2	C3	C4	C5	C6	C7	C8	C9	C10	C11	C12
FABR-060-L1	Ø66.7	4-M4x10	Ø8	33	Ø38.1	5	60	86	153	5.5	77.5	107.5
FABR-060-L2								115	182			
FABR-060-L1	Ø70	4-M4x10,4-M5x12	Ø11,Ø14	33	Ø50	5	60	86	153	5.5	77.5	107.5
FABR-060-L2								115	182			
FABR-060-L1	Ø90	4-M5x12,4-M6x14	Ø19	42.5	Ø70	6.5	80	86	163	12	87	117
FABR-060-L2								115	192			

* C1~C7是公制标准马达连接板之尺寸,可根据客户要求单独定做。

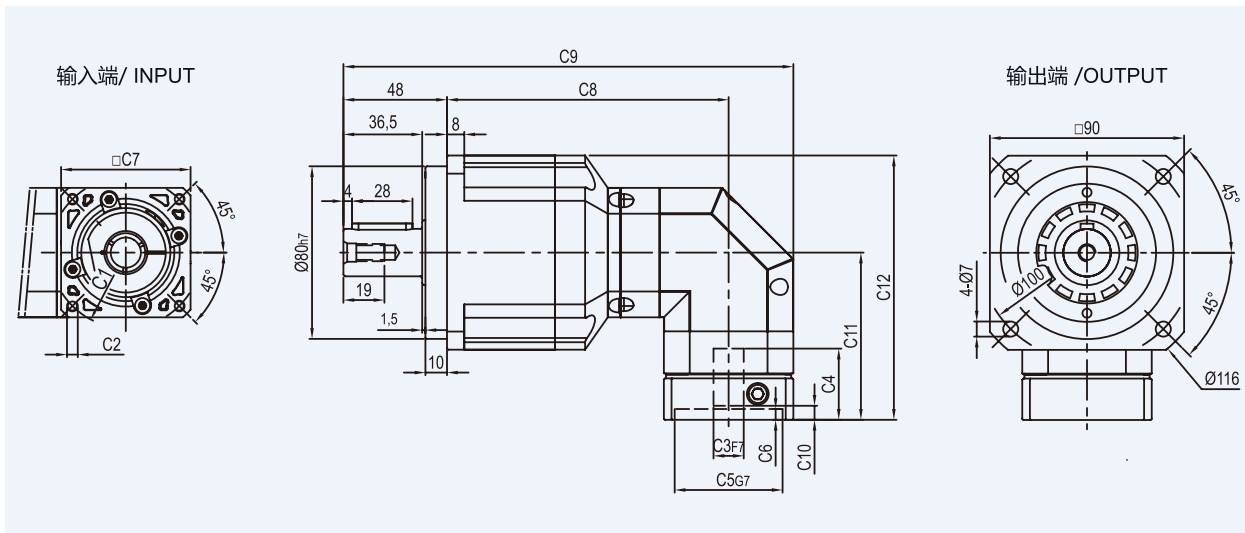
* C1~C7are motor(metric standard) specific dimensions, which could be customised.

外形尺寸图表 / OUTLINE DIMENSION SHEET

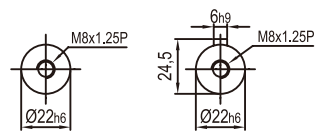
FABR-090-L1



FABR-090-L2



输出轴径



轴型式 S1

轴型式 S2

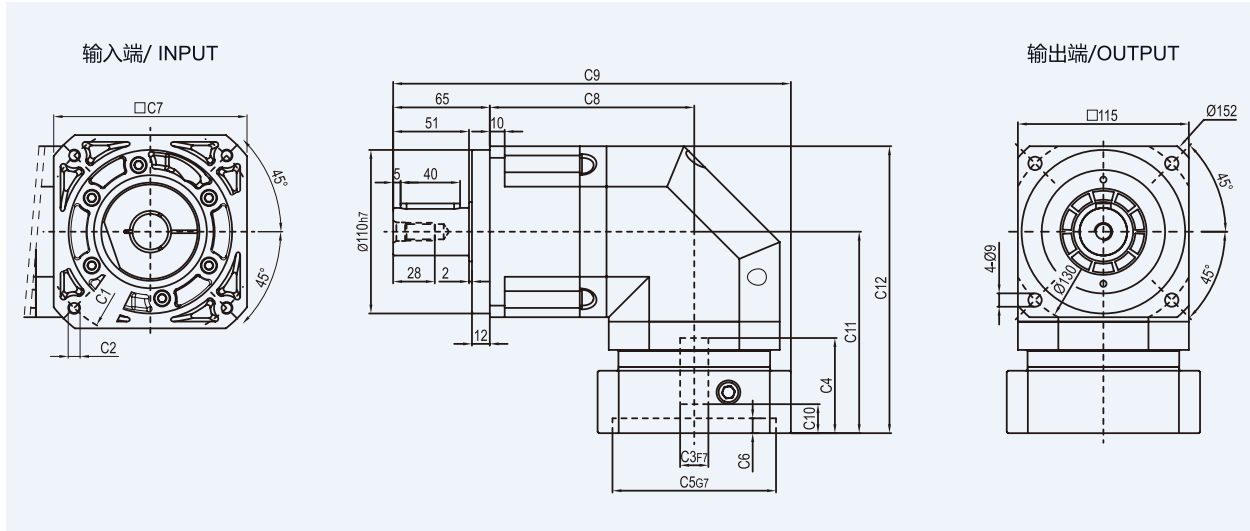
尺寸	C1	C2	C3	C4	C5	C6	C7	C8	C9	C10	C11	C12
FABR-090-L1	Ø90	4-M5x12,4-M6x14	Ø19	45	Ø70	6.5	80	116	209	7	96	141
	Ø100	4-M6x14	Ø16	45	Ø80	6.5	86	116	209	6	96	141
	Ø115	4-M8x20	Ø19,Ø22	56.5	Ø95	8	100	116	214	16.5	117.5	162.5
	Ø145	4-M8x20	Ø19,Ø22,Ø24	59	Ø110	11	130	116	229	19	120	165
FABR-090-L2	Ø66.7	4-M4x10	Ø8	33	Ø38.1	5	60	130.5	208.5	5.5	77.5	122.5
	Ø70	4-M4x10,4-M5x12	Ø11,Ø14	33	Ø50	5	60	130.5	208.5	5.5	77.5	122.5
	Ø90	4-M5x12,4-M6x14	Ø19	42.5	Ø70	6.5	80	130.5	218.5	12	87	132
	Ø100	4-M6x14	Ø16	42.5	Ø80	6.5	86	130.5	221.5	11	87	132

* C1~C7是公制标准马达连接板之尺寸,可根据客户要求单独定做。

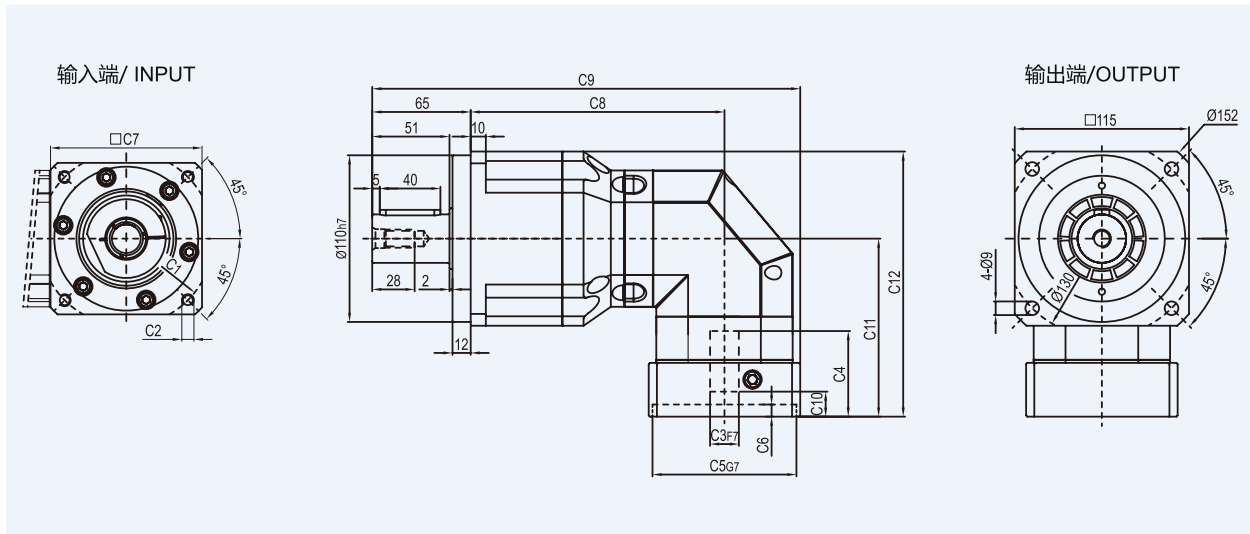
* C1~C7are motor(metric standard) specific dimensions, which could be customised.

外形尺寸图表 / OUTLINE DIMENSION SHEET

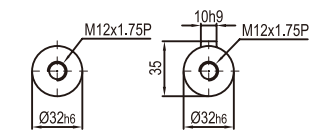
FABR-115-L1



FABR-115-L2



输出轴径



轴型式 S1 轴型式 S2

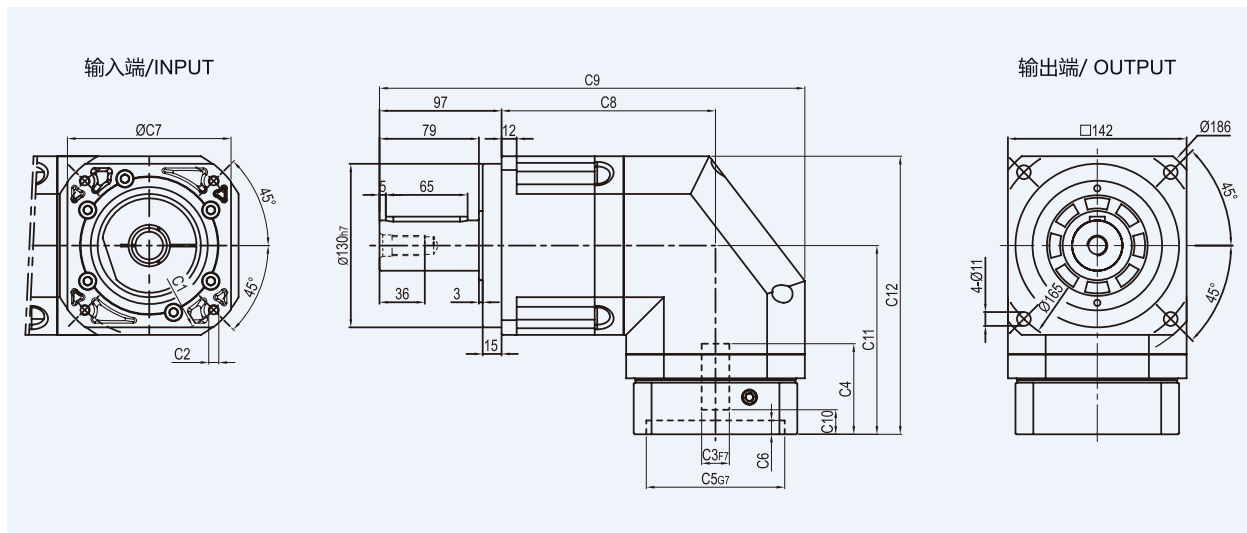
尺寸	C1	C2	C3	C4	C5	C6	C7	C8	C9	C10	C11	C12
FABR-115-L1	Ø145	4-M8x20	Ø19,Ø22,Ø24	64	Ø110	10	130	137.5	267.5	19.5	135.5	193
	Ø200	4-M12x28	Ø35	81	Ø114.3	10	180	137.5	292.5	28	152.5	210
FABR-115-L2	Ø90	4-M5x12,4-M6x14	Ø19	45	Ø70	6.5	80	167.5	277.5	7	96	153.5
	Ø100	4-M6x14	Ø16	45	Ø80	6.5	86	167.5	277.5	6	96	153.5
	Ø115	4-M8x20	Ø19,Ø22	56.5	Ø95	8	100	167.5	282.5	16.5	117.5	175
	Ø145	4-M8x20	Ø19,Ø22,Ø24	59	Ø110	11	130	167.5	297.5	19	120	177.5

* C1~C7是公制标准马达连接板之尺寸,可根据客户要求单独定做。

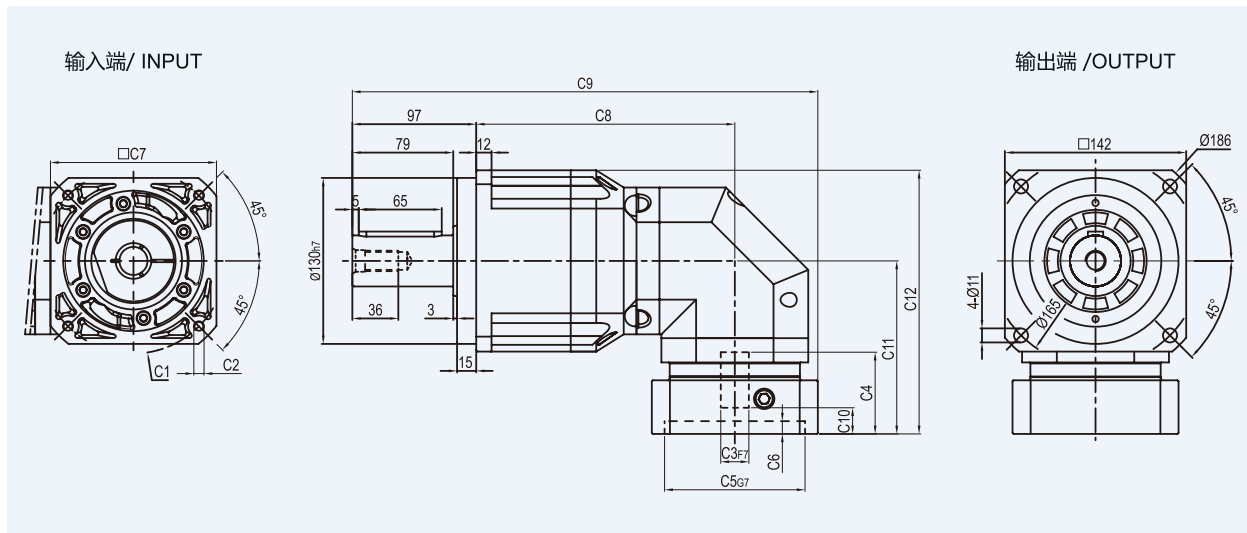
* C1~C7are motor(metric standard) specific dimensions, which could be customised.

外形尺寸图表 / OUTLINE DIMENSION SHEET

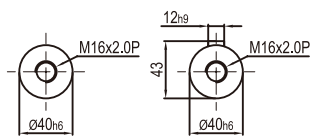
FABR-142-L1



FABR-142-L2



输出轴径



轴型式 S1

轴型式 S2

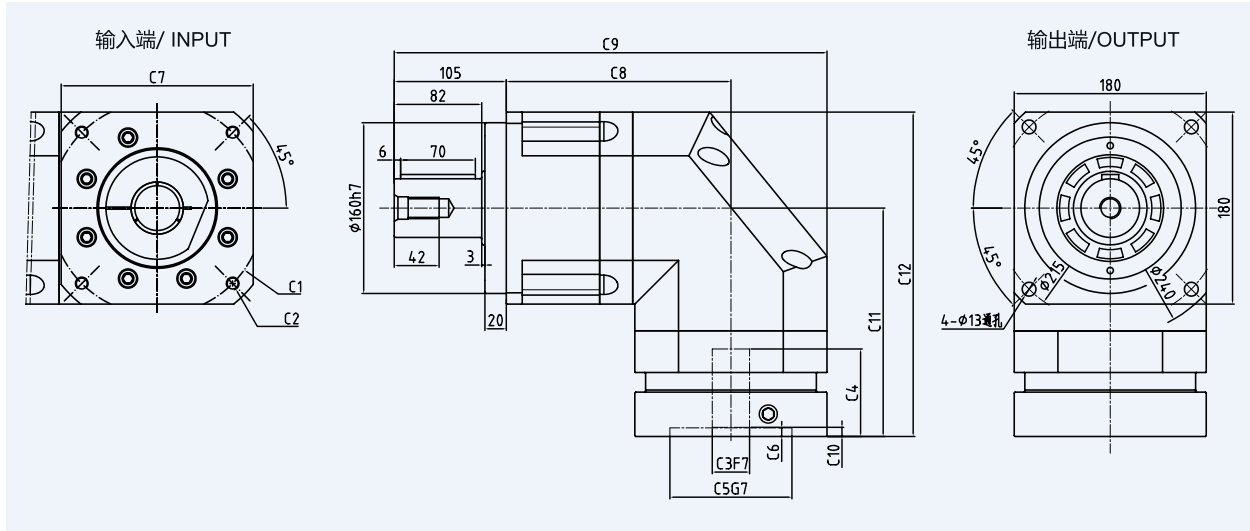
尺寸	C1	C2	C3	C4	C5	C6	C7	C8	C9	C10	C11	C12
FABR-142-L1	$\phi 145$	4-M8x20	$\phi 22, \phi 24$	72	$\phi 110$	11	130	170	338	19.5	150	221
	$\phi 200$	4-M12x28	$\phi 35$	82	$\phi 114.3$	8	180	170	357	25	160	231
FABR-142-L2	$\phi 145$	4-M8x20	$\phi 19, \phi 22, \phi 24$	64	$\phi 110$	10	130	202.5	364.5	19.5	135.5	206.5
	$\phi 200$	4-M12x28	$\phi 35$	81	$\phi 114.3$	10	180	202.5	389.5	28	152.5	223.5

* C1~C7是公制标准马达连接板之尺寸,可根据客户要求单独定做。

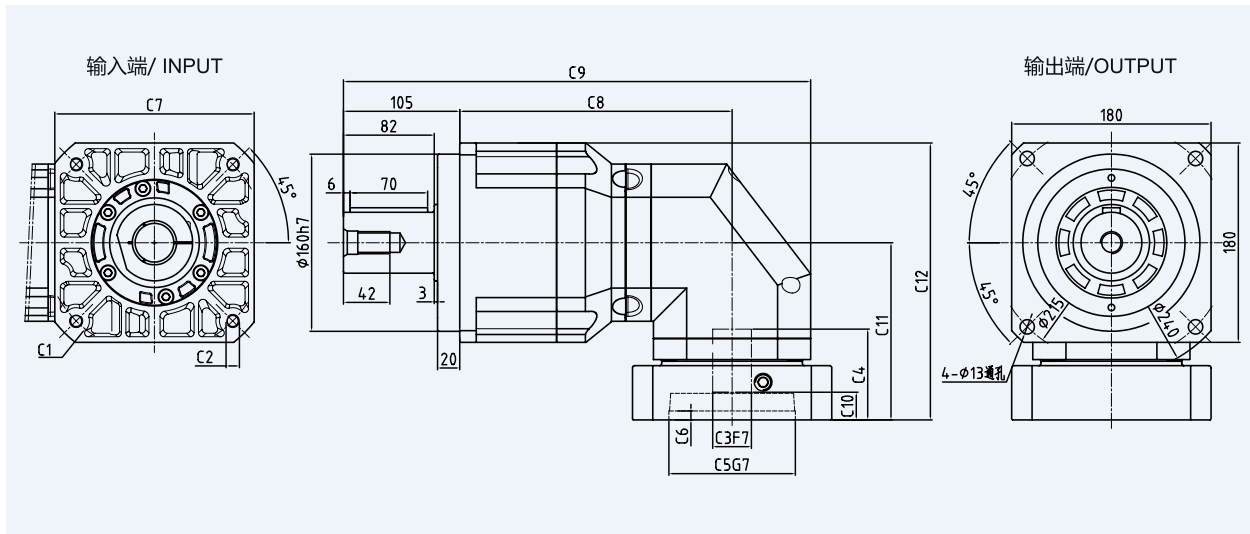
* C1~C7are motor(metric standard) specific dimensions, which could be customised.

外形尺寸图表 / OUTLINE DIMENSION SHEET

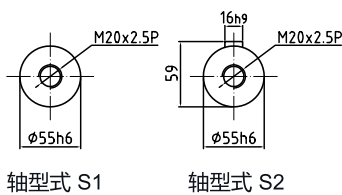
FABR-180-L1



FABR-180-L2



输出轴径



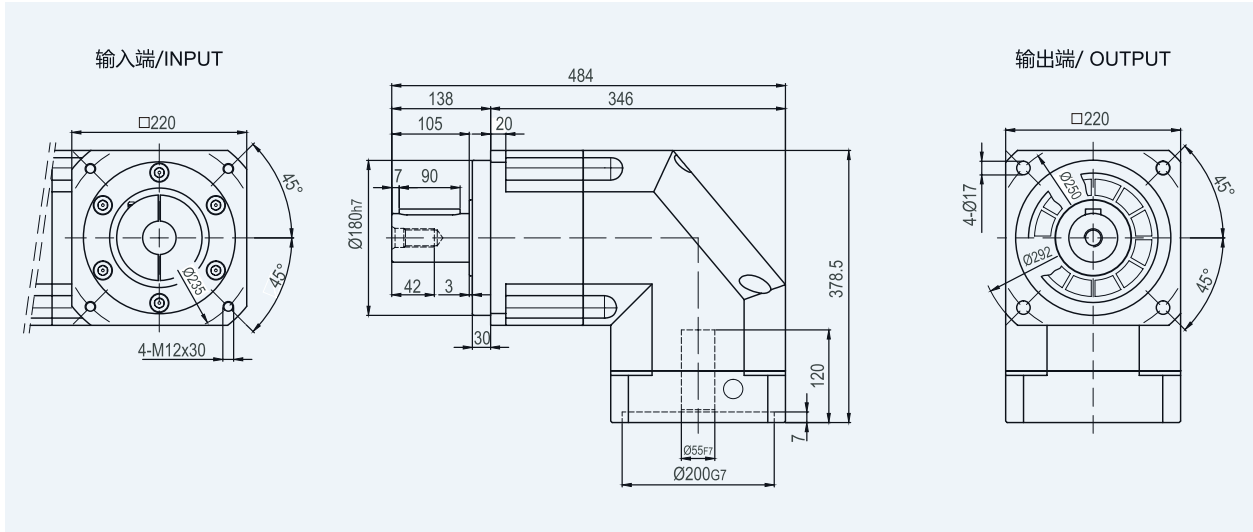
尺寸	C1	C2	C3	C4	C5	C6	C7	C8	C9	C10	C11	C12
FABR180-L1	$\phi 200$	4-M12X28	$\phi 35, \phi 42$	82	$\phi 114.3$	8	180	210.5	405.5	8.5	214	304
	$\phi 200$	4-M12X28	$\phi 42$	117.5	$\phi 114.3$	8	180	210.5	405.5	45.5	249.5	339.5
	$\phi 215$	4-M12X28	$\phi 38, \phi 42$	87	$\phi 180$	8	192	210.5	405.5	15	219	309
FABR180-L2	$\phi 235$	4-M12X28	$\phi 38, \phi 42$	117.5	$\phi 200$	10	220	210.5	405.5	45.5	249.5	339.5
	$\phi 145$	4-M8X20	$\phi 22, \phi 24$	72	$\phi 110$	11	130	246	422	19.5	150	240
	$\phi 200$	4-M12X28	$\phi 35$	82	$\phi 114.3$	8	180	246	422	25	160	250
	$\phi 215$	4-M12X28	$\phi 38$	82	$\phi 180$	8	192	246	422	25	171.5	261.5

* C1~C7是公制标准马达连接板之尺寸,可根据客户要求单独定做。

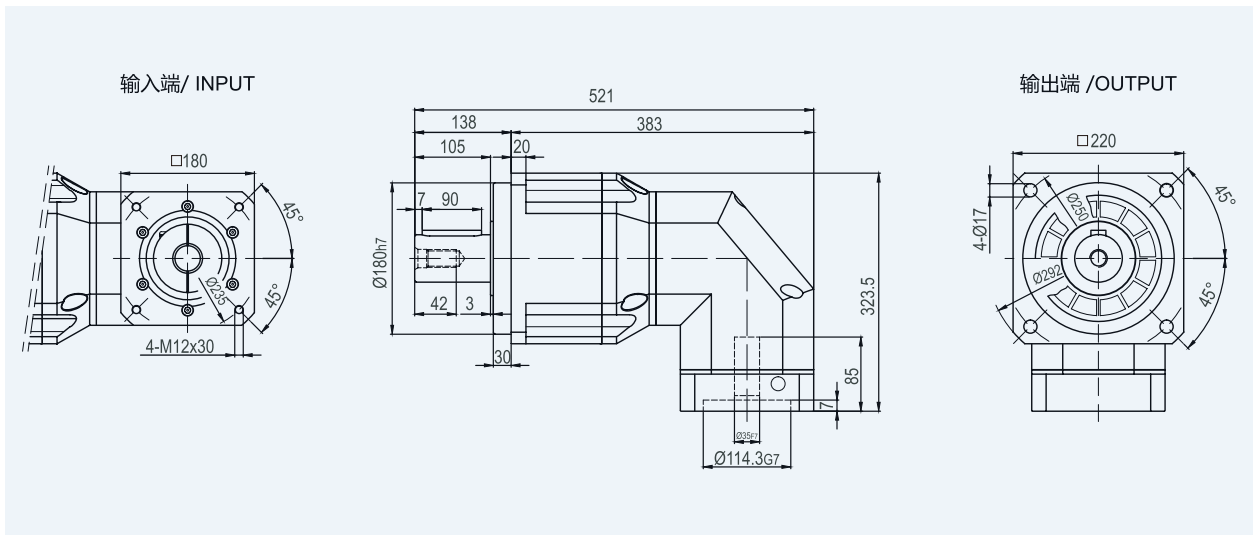
* C1~C7are motor(metric standard) specific dimensions, which could be customised.

外形尺寸图表 / OUTLINE DIMENSION SHEET

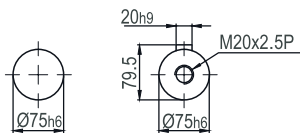
FABR-220-L1



FABR-220-L2



输出轴径



轴型式 S1 轴型式 S2

*输入马达连接板之尺寸,可根据客户要求单独定做。
 *The input motor specific dimensions could be customised.