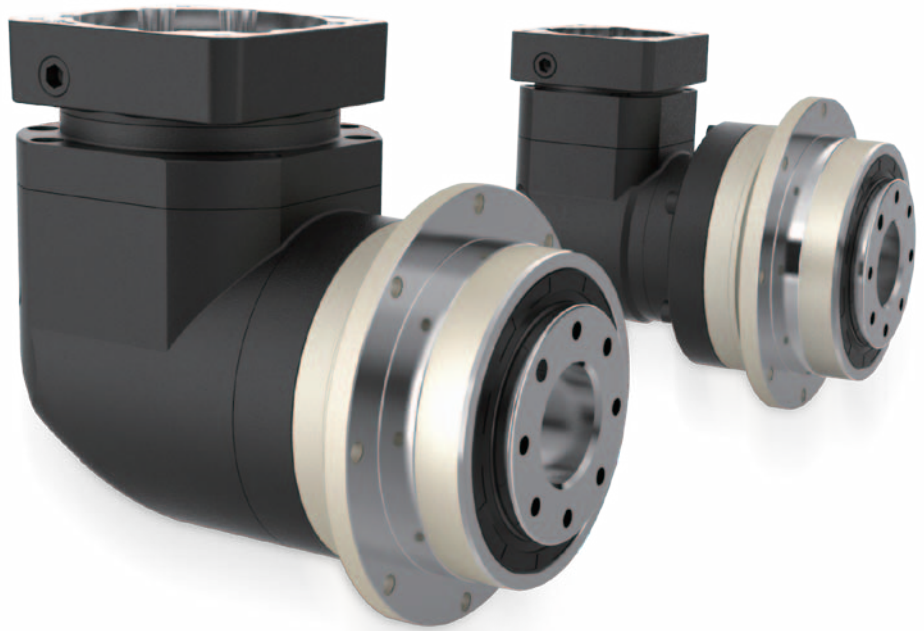


# FADR Series

- ✓ FADR047
- ✓ FADR064
- ✓ FADR090
- ✓ FADR110
- ✓ FADR140
- ✓ FADR200
- ✓ FADR255



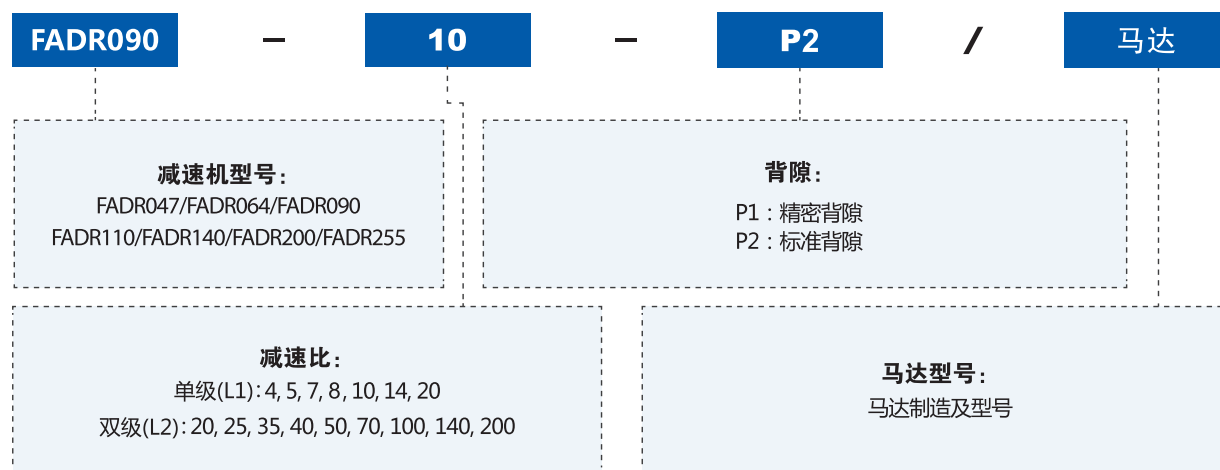
# FADR

Series

**SEIKO QUALITY**  
SHARED GLOBALLY

精工品质 全球共享

## 型号说明 MODEL ILLUMINATE



**选用范例: FADR090- 10- P2 /MHMD-082G1U**

## 性能 -FADR 减速机

规格	单位	节数	减速比 <sup>①</sup>	FADR047	FADR064	FADR090	FADR110	FADR140	FADR200	FADR255
额定输出力矩 $T_{2N}$	Nm	单级 L1	4	19	48	130	270	560	1100	1700
			5	22	60	160	330	650	1200	2000
			6	-	55	150	310	600	-	1800
			7	19	50	140	300	550	1100	1800
			8	17	48	130	270	560	1000	1600
			10	14	60	160	330	650	520	1220
			14	-	50	140	300	550	1100	1800
		20	-	40	100	230	450	520	1220	
		20	19	48	130	270	560	1100	1700	
		25	22	60	160	330	650	1200	2000	
		35	22	60	160	330	650	1200	2000	
		40	22	48	130	270	560	1200	2000	
		50	22	60	160	330	650	1200	2000	
		60	-	55	150	310	600	-	-	
		70	22	60	160	330	650	1200	2000	
		80	-	48	130	270	560	-	-	
		100	22	60	160	330	650	1200	2000	
		120	-	-	150	310	600	-	-	
140	-	-	140	300	550	1100	1800			
160	-	-	120	260	500	-	-			
200	-	-	100	230	450	520	1220			
紧急制动力矩 $T_{2B}$	Nm	L1.L2	4~200	3 倍额定输出力矩						
额定输入转速 $N_1$	rpm	L1.L2	4~200	5000	5000	4000	4000	3000	3000	2000
最大输入转速 $n_{1B}$	rpm	L1.L2	4~200	10000	10000	8000	8000	6000	6000	4000
超精密背隙 P0	arcmin	L1	4~20	-	-	≤ 2	≤ 2	≤ 2	≤ 2	≤ 2
		L2	20~200	-	-	≤ 4	≤ 4	≤ 4	≤ 4	≤ 4
精密背隙 P1	arcmin	L1	4~20	≤ 4	≤ 4	≤ 4	≤ 4	≤ 4	≤ 4	≤ 4
		L2	20~200	≤ 7	≤ 7	≤ 7	≤ 7	≤ 7	≤ 7	≤ 7
标准背隙 P2	arcmin	L1	4~20	≤ 6	≤ 6	≤ 6	≤ 6	≤ 6	≤ 6	≤ 6
		L2	20~200	≤ 9	≤ 9	≤ 9	≤ 9	≤ 9	≤ 9	≤ 9
扭转刚性	Nm/arcmin	L1.L2	4~200	7	13	31	82	151	440	1006
容许径向力 $F_{2rB}$ <sup>①</sup>	N	L1.L2	4~200	42.5	125	235	430	1300	3064	5900
容许轴向力 $F_{2aB}$ <sup>①</sup>	N	L1.L2	4~200	1080	2110	2310	4800	6200	5450	10600
使用寿命	hr	L1.L2	4~200	20000 <sup>③</sup>						
效率 $\eta$	%	L1	4~20	≥ 95%						
		L2	20~200	≥ 92%						
重量	kg	L1	4~20	1.1	2.1	5.9	10.5	21.9	50.9	85.4
		L2	20~200	1.4	1.9	4.5	9.8	20.1	45.4	85.9
使用温度	°C	L1.L2	4~200	-10°C ~ +90°C						
润滑		L1.L2	4~200	合成润滑油脂 / 终身润滑						
防护等级		L1.L2	4~200	IP65						
安装方式		L1.L2	4~200	任意方向						
噪音值 ( $n_1=3000\text{rpm}$ )	dB	L1.L2	4~200	≤ 61	≤ 63	≤ 65	≤ 68	≤ 70	≤ 72	≤ 74

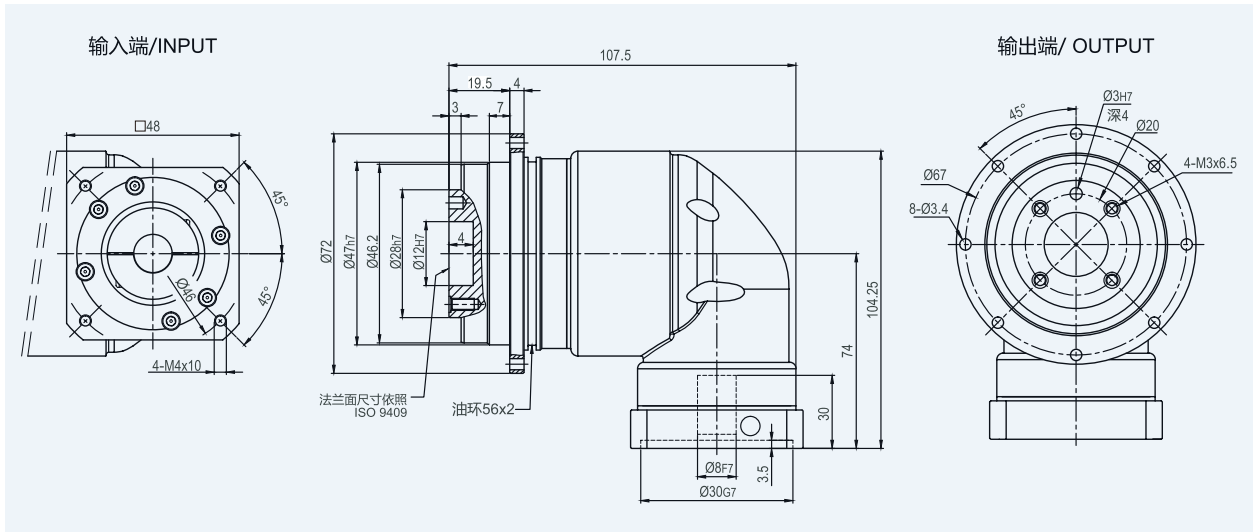
## 惯量 -FADR 减速机

规格	单位	节数	减速比 <sup>①</sup>	FADR047	FADR064	FADR090	FADR110	FADR140	FADR200	FADR255
转动惯量 $J_1$	$\text{kg} \cdot \text{cm}^2$	L1	4~10	0.09	0.35	2.25	6.84	23.4	68.9	135.4
			14	-	0.07	1.87	6.25	21.8	65.6	119.8
			20	-	0.07	1.87	6.25	21.8	65.6	119.8
		L2	20~100	0.09	0.09	0.35	2.25	6.84	23.4	68.9
			140~200	-	-	0.31	1.87	6.25	21.8	65.6

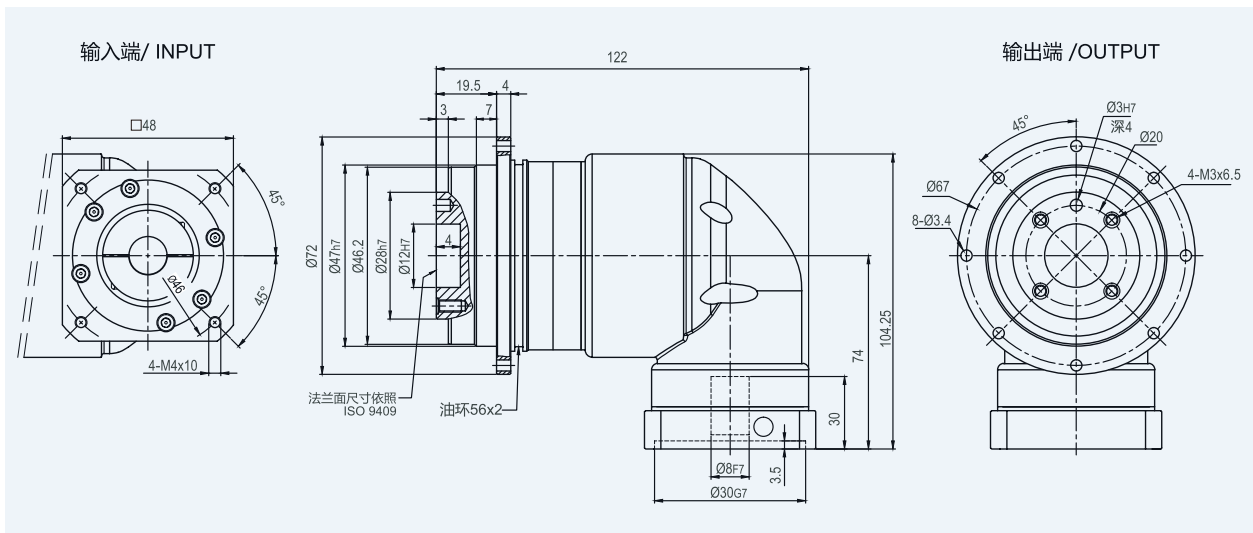
1. 减速比 ( $i=N_1/N_{out}$ )      2. 输出转速 100rpm 时, 作用于输出轴中心位置      3. 连续运转降低使用寿命二分之一

# 外形尺寸图表 / OUTLINE DIMENSION SHEET

## FADR-047-L1



## FADR-047-L2

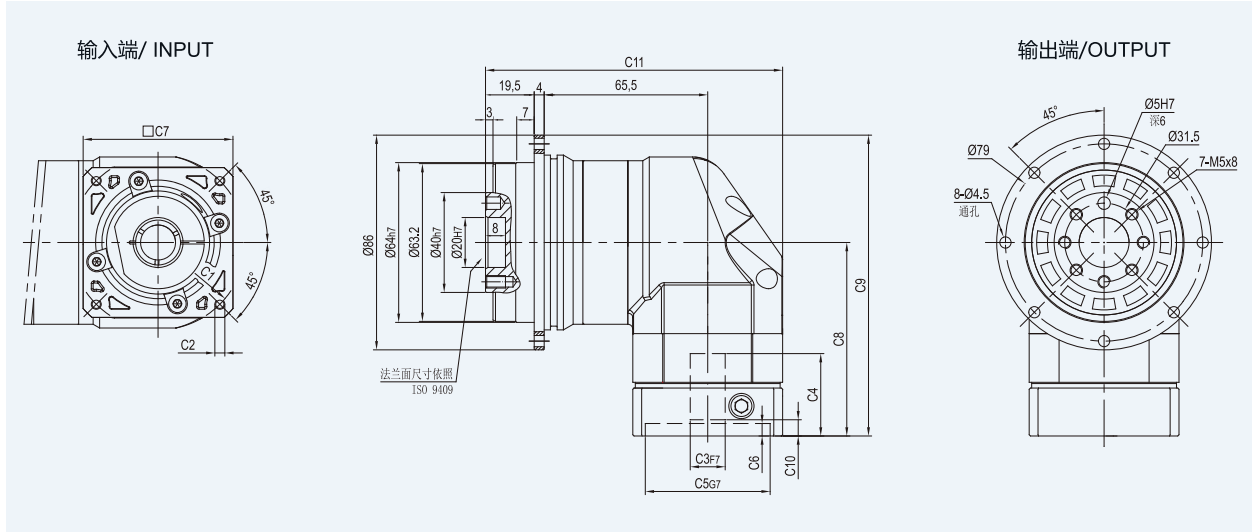


\*输入马达连接板之尺寸,可根据客户要求单独定做。  
 \*The input motor specific dimensions could be customised.

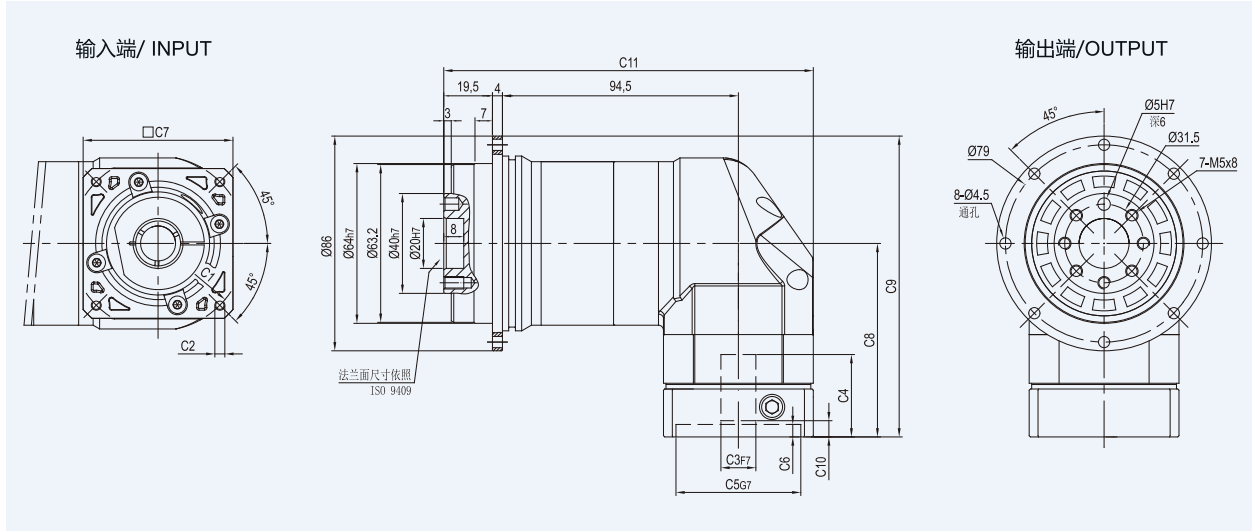
# FADR Series

## 外形尺寸图表 / OUTLINE DIMENSION SHEET

### FADR-064-L1



### FADR-064-L2



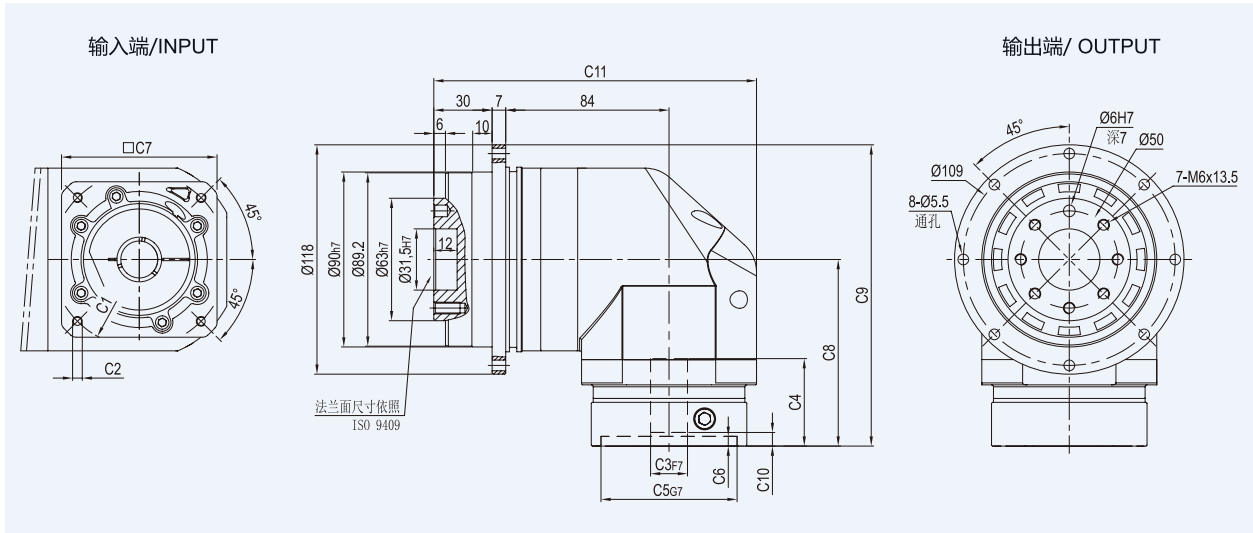
尺寸	C1	C2	C3	C4	C5	C6	C7	C8	C9	C10	C11
FADR-064-L1	Ø66.7	4-M4x10	Ø8	33	Ø38.1	5	60	77.5	120.5	5.5	119
FADR-064-L2											148
FADR-064-L1	Ø70	4-M4x10,4-M5x12	Ø11,Ø14	33	Ø50	5	60	77.5	120.5	5.5	119
FADR-064-L2											148
FADR-064-L1	Ø90	4-M5x12,4-M6x14	Ø19	42.5	Ø70	6.5	80	87	130	12	129
FADR-064-L2											158

\* C1~C7是公制标准马达连接板之尺寸,可根据客户要求单独定做。

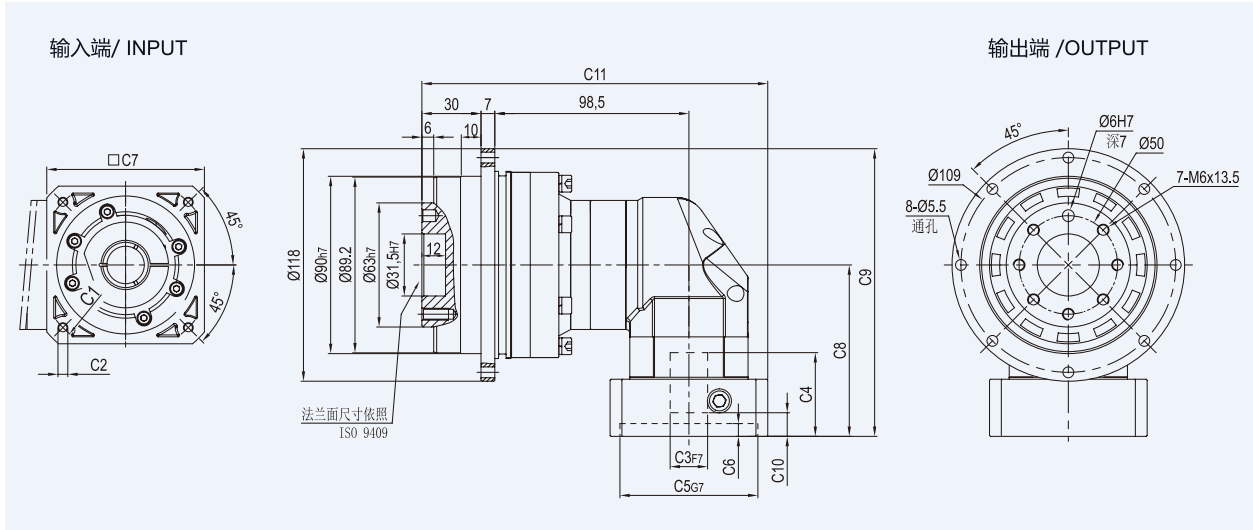
\* C1~C7are motor(metric standard) specific dimensions, which could be customised.

## 外形尺寸图表 / OUTLINE DIMENSION SHEET

### FADR-090-L1



### FADR-090-L2



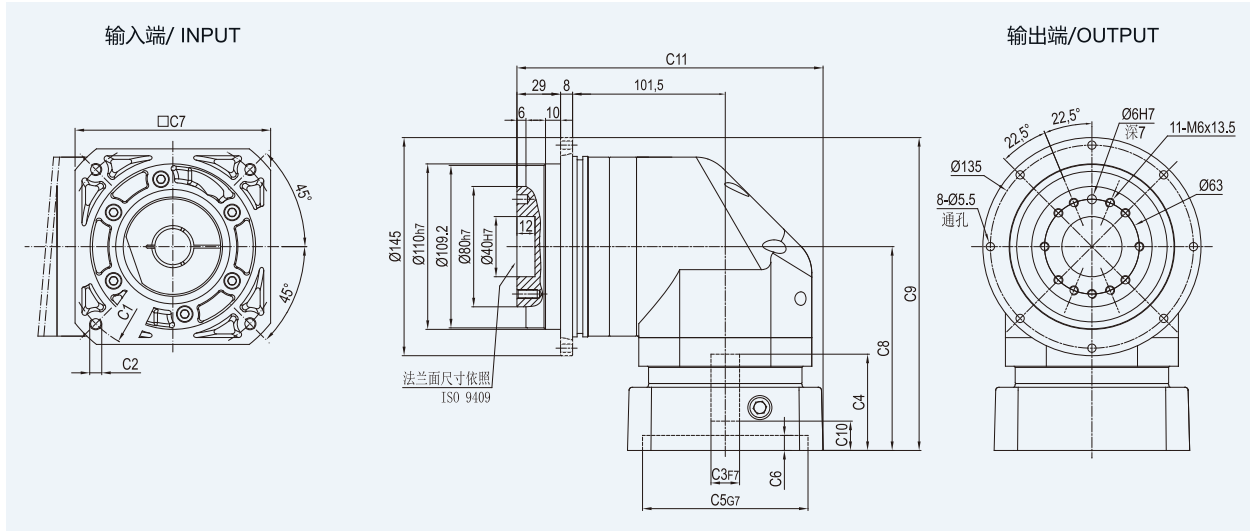
尺寸	C1	C2	C3	C4	C5	C6	C7	C8	C9	C10	C11
FADR-090-L1	Ø90	4-M5x12,4-M6x14	Ø19	45	Ø70	6.5	80	96	155	7	166
	Ø100	4-M6x14	Ø16	45	Ø80	6.5	86	96	155	6	166
	Ø115	4-M8x20	Ø19,Ø22	56.5	Ø95	8	100	117.5	176.5	16.5	171
	Ø145	4-M8x20	Ø19,Ø22,Ø24	59	Ø110	11	130	120	179	19	186
FADR-090-L2	Ø66.7	4-M4x10	Ø8	33	Ø38.1	5	60	77.5	136.5	5.5	165.5
	Ø70	4-M4x10,4-M5x12	Ø11,Ø14	33	Ø50	5	60	77.5	136.5	5.5	165.5
	Ø90	4-M5x12,4-M6x14	Ø19	42.5	Ø70	6.5	80	87	146	12	175.5
	Ø100	4-M6x14	Ø16	42.5	Ø80	6.5	86	87	146	11	175.5

\* C1~C7是公制标准马达连接板之尺寸,可根据客户要求单独定做。

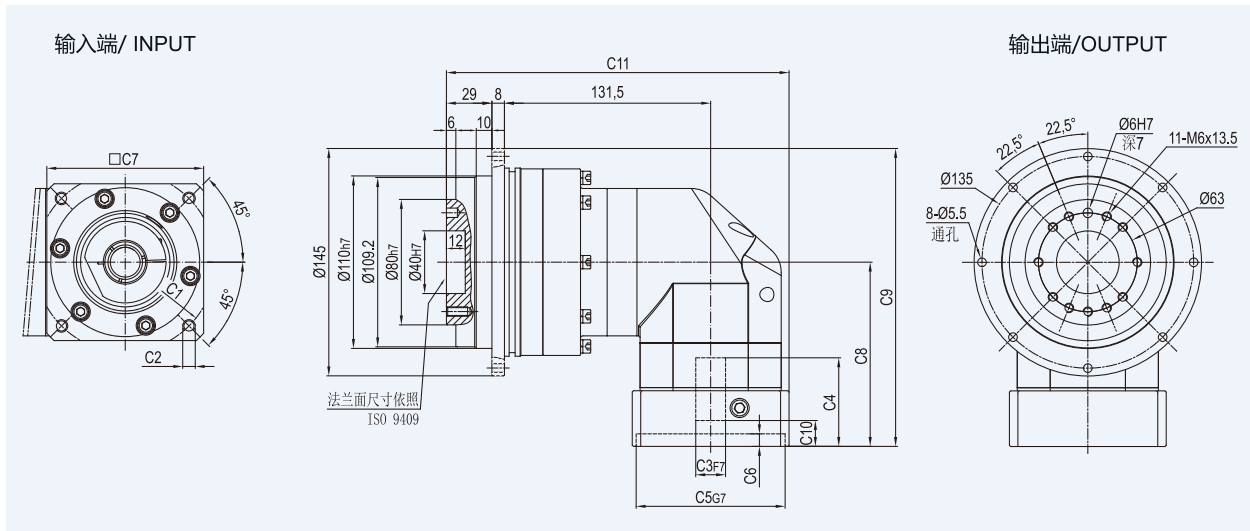
\* C1~C7are motor(metric standard) specific dimensions, which could be customised.

## 外形尺寸图表 / OUTLINE DIMENSION SHEET

### FADR-110-L1



### FADR-110-L2



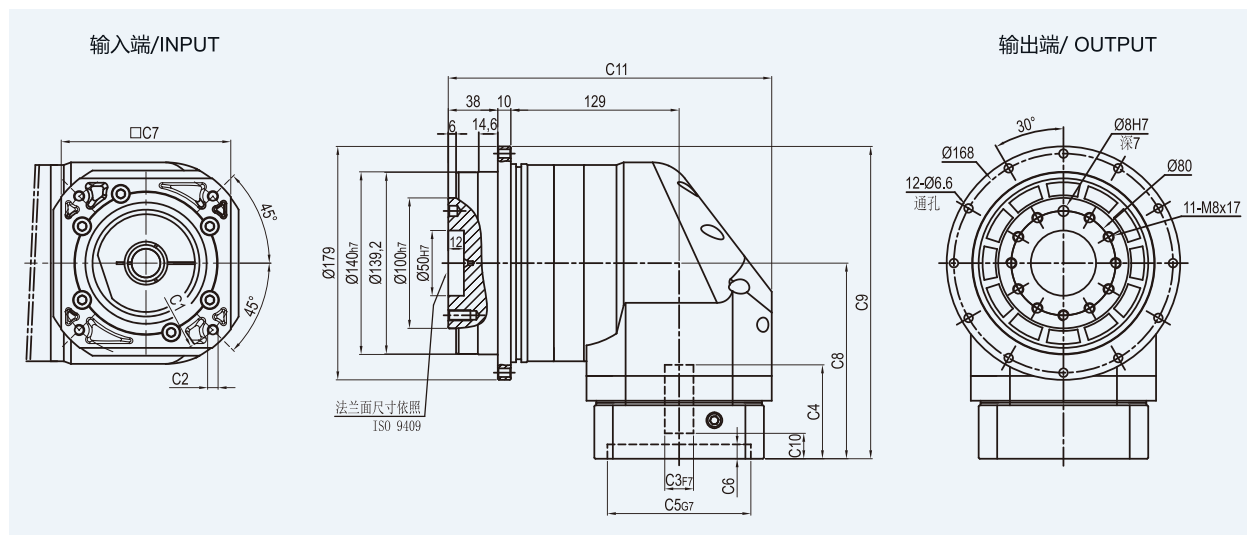
尺寸	C1	C2	C3	C4	C5	C6	C7	C8	C9	C10	C11
FADR-110-L1	Ø145	4-M8x20	Ø19,Ø22,Ø24	64	Ø110	10	130	135.5	208	19.5	203.5
	Ø200	4-M12x28	Ø35	81	Ø114.3	10	180	152.5	225	28	228.5
FADR-110-L2	Ø90	4-M5x12,4-M6x14	Ø19	45	Ø70	6.5	80	96	168.5	7	213.5
	Ø100	4-M6x14	Ø16	45	Ø80	6.5	86	96	168.5	6	213.5
	Ø115	4-M8x20	Ø19,Ø22	56.5	Ø95	8	100	117.5	190	16.5	218.5
	Ø145	4-M8x20	Ø19,Ø22,Ø24	59	Ø110	11	130	120	192.5	19	233.5

\* C1~C7是公制标准马达连接板之尺寸,可根据客户要求单独定做。

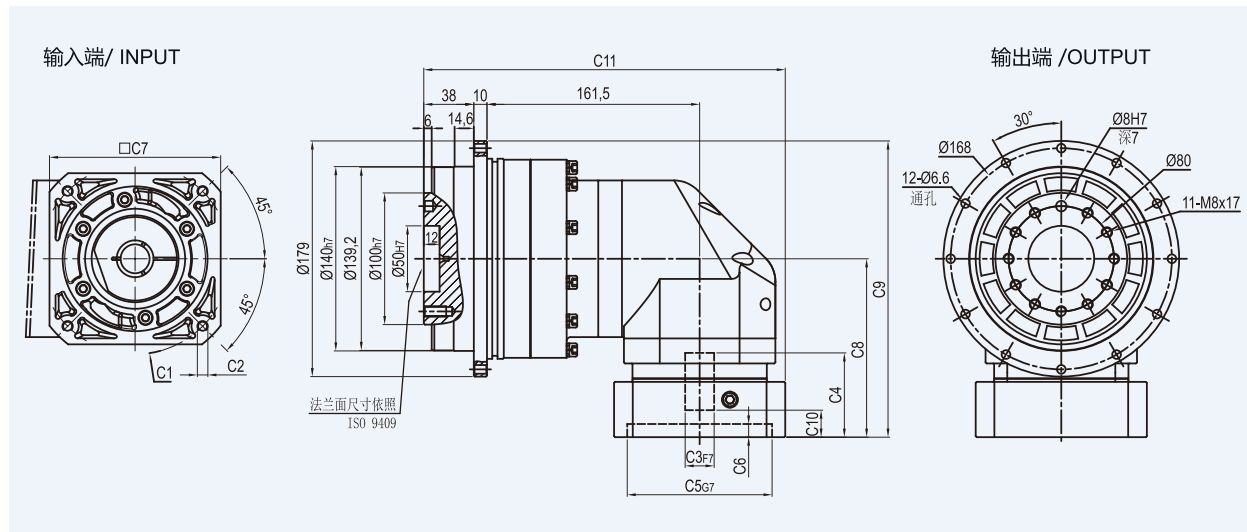
\* C1~C7are motor(metric standard) specific dimensions, which could be customised.

## 外形尺寸图表 / OUTLINE DIMENSION SHEET

### FADR-140-L1



### FADR-140-L2



尺寸	C1	C2	C3	C4	C5	C6	C7	C8	C9	C10	C11
FADR-140-L1	Ø145	4-M8x20	Ø22,Ø24	72	Ø110	11	130	150	239.5	19.5	248
	Ø200	4-M12x28	Ø35	82	Ø114.3	8	180	160	249.5	25	267
FADR-140-L2	Ø145	4-M8x20	Ø19,Ø22,Ø24	64	Ø110	10	130	135.5	225	19.5	274.5
	Ø200	4-M12x28	Ø35	81	Ø114.3	10	180	152.5	242	28	299.5

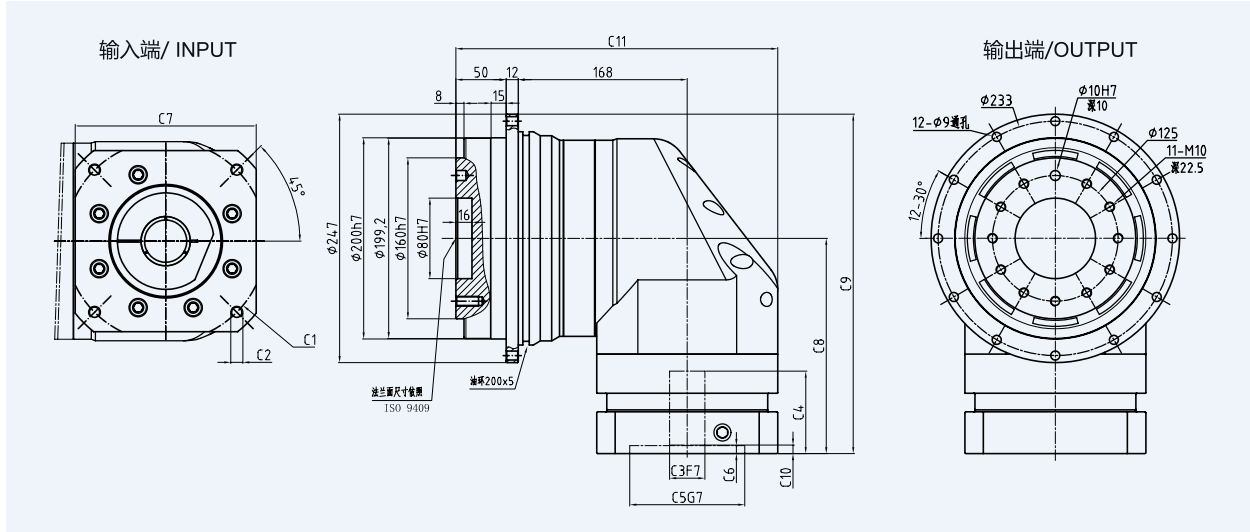
\* C1~C7是公制标准马达连接板之尺寸,可根据客户要求单独定做。

\* C1~C7are motor(metric standard) specific dimensions, which could be customised.

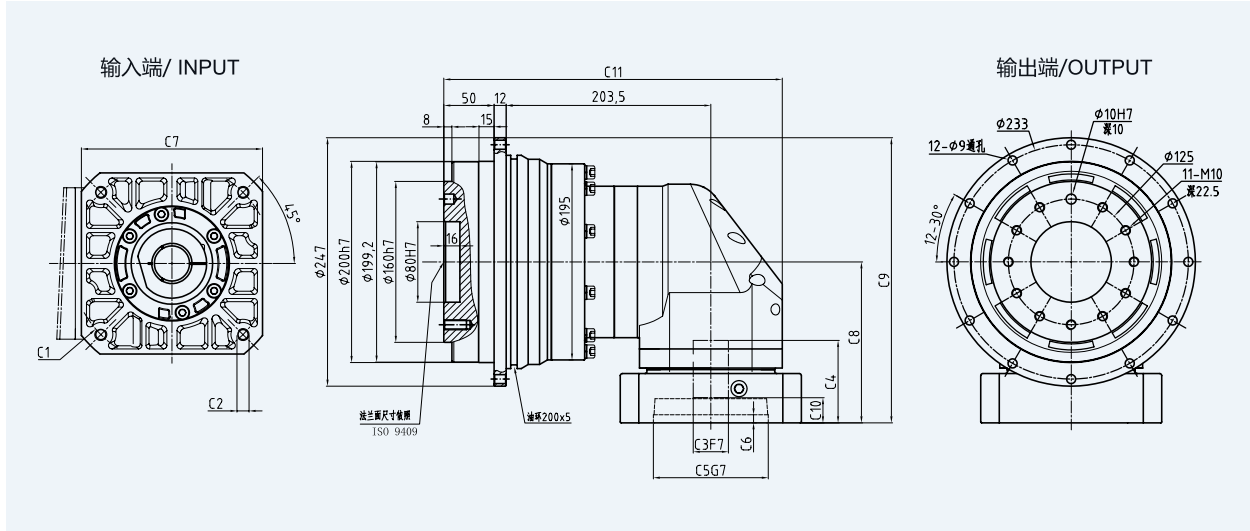


## 外形尺寸图表 / OUTLINE DIMENSION SHEET

### FADR-200-L1



### FADR-200-L2



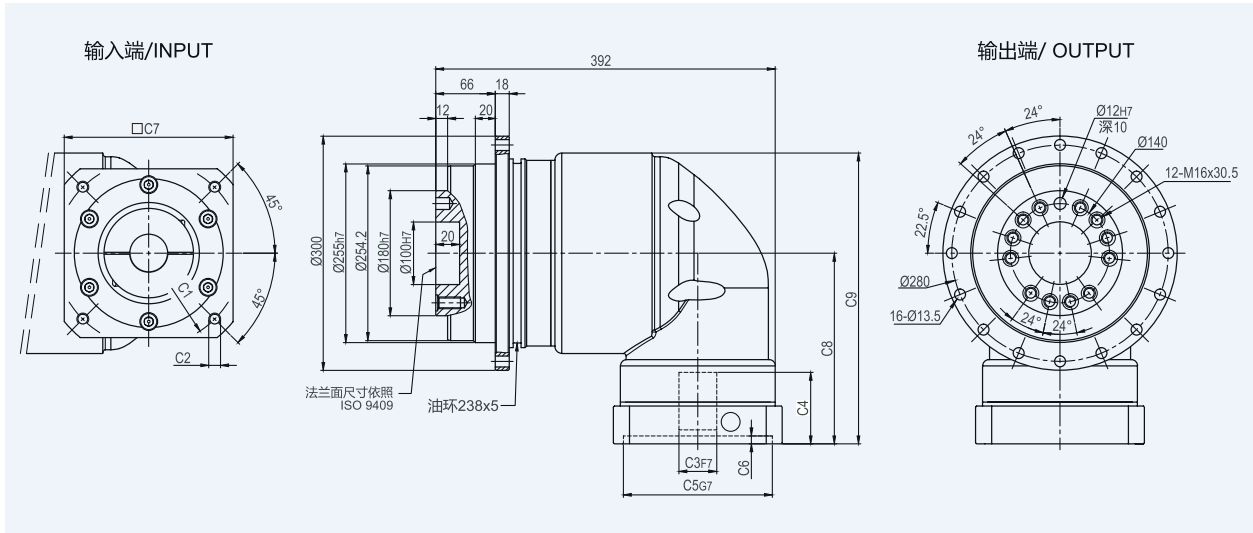
尺寸	C1	C2	C3	C4	C5	C6	C7	C8	C9	C10	C11
FADR200-L1	$\phi 200$	4-M12X28	$\phi 35, \phi 42$	82	$\phi 114.3$	8	180	214	337.5	8.5	320
	$\phi 200$	4-M12X28	$\phi 42$	117.5	$\phi 114.3$	8	180	249.5	373	45.5	320
	$\phi 215$	4-M12X28	$\phi 38, \phi 42$	87	$\phi 180$	8	192	219	342.5	13.5	320
	$\phi 235$	4-M12X28	$\phi 38, \phi 42$	117.5	$\phi 200$	10	220	249.5	373	45.5	320
FADR200-L2	$\phi 145$	4-M8X20	$\phi 22, \phi 24$	72	$\phi 110$	11	130	150	273.5	19.5	336.5
	$\phi 200$	4-M12X28	$\phi 35$	82	$\phi 114.3$	8	180	160	283.5	25	336.5
	$\phi 215$	4-M12X28	$\phi 38$	82	$\phi 180$	8	192	171.5	295	25	336.5

\* C1~C7是公制标准马达连接板之尺寸,可根据客户要求单独定做。

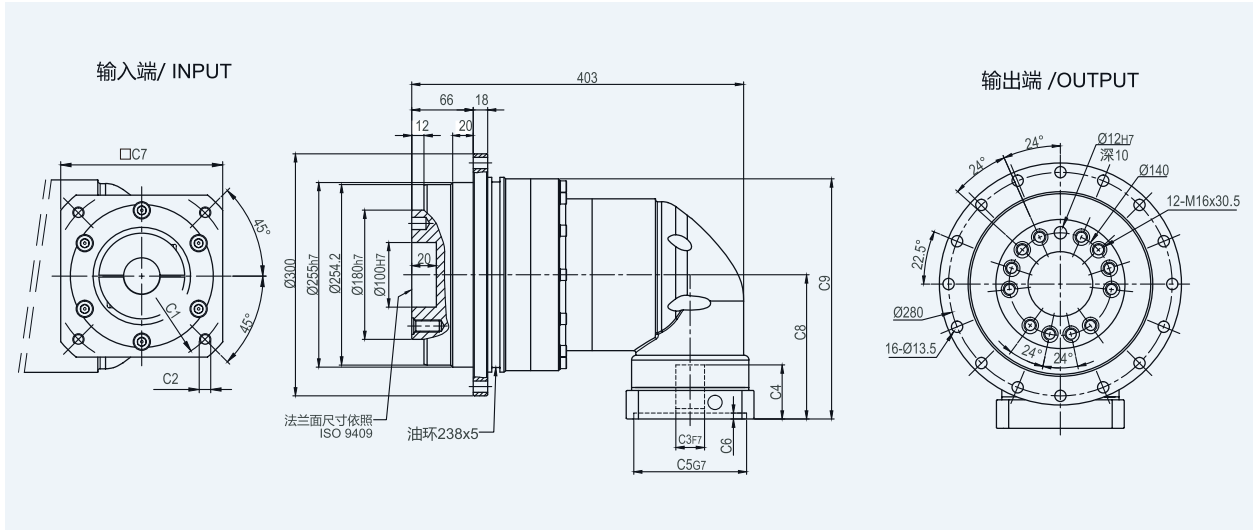
\* C1~C7 are motor (metric standard) specific dimensions, which could be customised.

## 外形尺寸图表 / OUTLINE DIMENSION SHEET

### FADR-255-L1



### FADR-255-L2



尺寸	C1	C2	C3	C4	C5	C6	C7	C8	C9
FADR-255-L1	Ø235	4-M12x28	Ø38, Ø42	116	Ø200	6	220	268.5	398.5
FADR-255-L2	Ø200	4-M12x28	Ø35	85	Ø114.3	6	180	213.5	340
	Ø215	4-M12x28	Ø38	85	Ø180	6	190	213.5	340

\* C1~C7是公制标准马达连接板之尺寸,可根据客户要求单独定做。

\* C1~C7are motor(metric standard) specific dimensions, which could be customised.